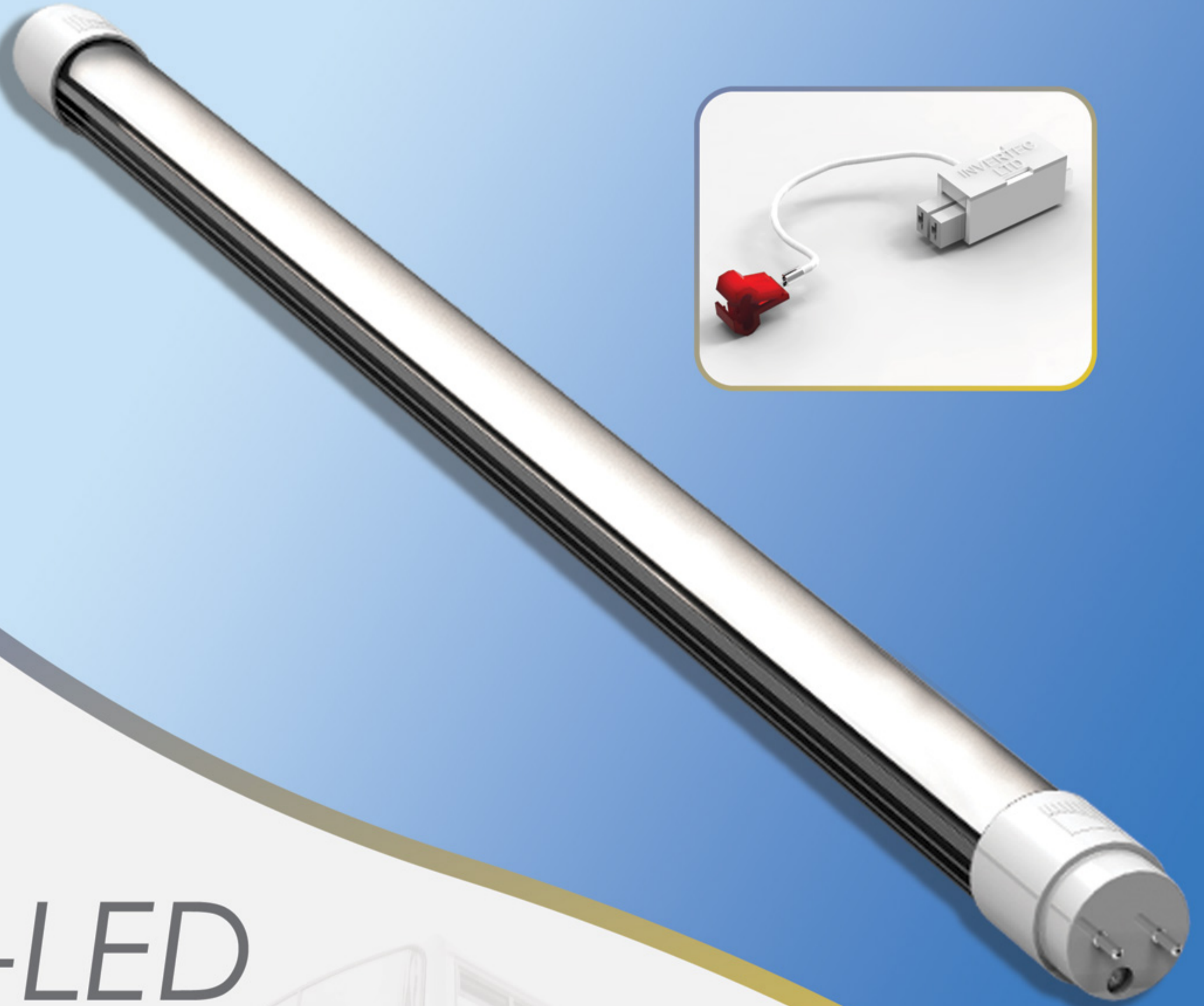




# INVERTEC

*illuminating ideas*



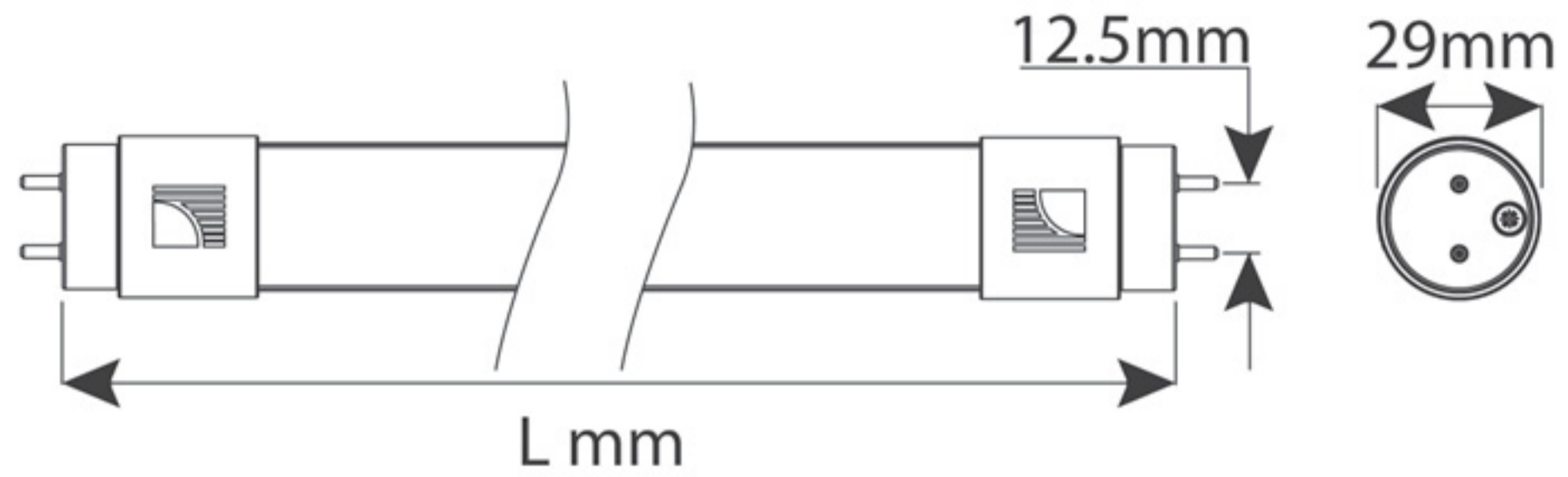
## T8-LED

LED Fluorescent Tube Replacement  
Hi-Power LEDs  
20 to 30 VDC

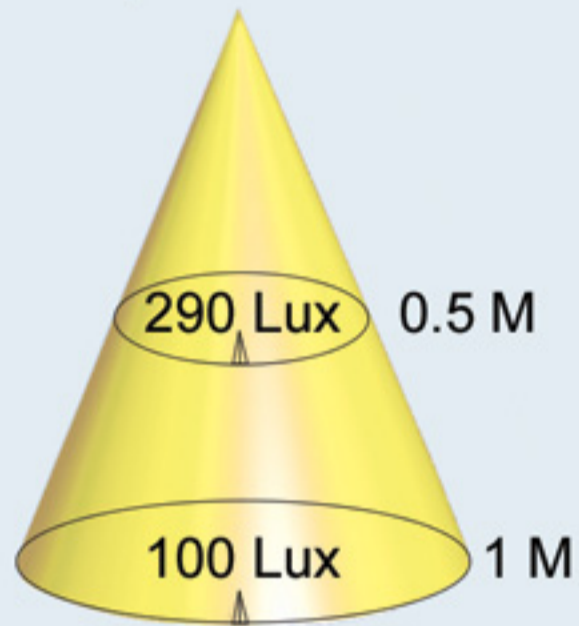


© 2012 Invertec Ltd.

[www.invertec.co.uk](http://www.invertec.co.uk)

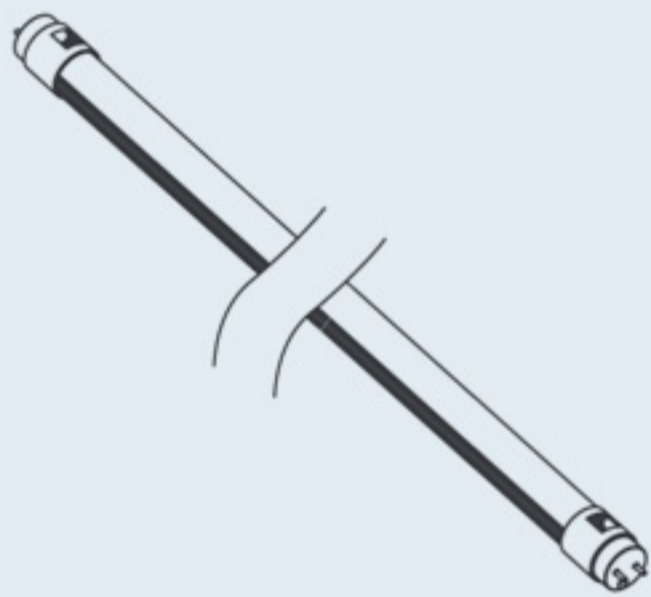


Lumen per Watt = 110



Measurements taken in lab environment

T8 Equivalent	Length (L)	24V	Lumen
15W	438mm	240mA	418
18W	590mm	375mA	626
30W	895mm	625mA	1044
36W	1200mm	875mA	1462
58W	1500mm	1125mA	1879



## Option Availability

● = Available as standard

○ = Optional on request

Options	Unit Colour	Mounting Angle		LED Colour (Kelvin)	
		0°	45° (A)	3900K (Neutral White)	5400K (Cool White)
LEDTUBE15		●	○	●	○
LEDTUBE18		●	○	●	○
LEDTUBE30		●	○	●	○
LEDTUBE36		●	○	●	○
LEDTUBE58		●	○	●	○

- A stylish LED tube for easy retrofit with Invertec designed inverters
- Utilizing super bright Neutral White and Cool White LEDs at low operating temperatures
- Lower energy consumption than fluorescent tubes whilst delivering equivalent illuminance
- Reduced long-term maintenance costs with a life expectancy of 50,000 hours L70
- Supplied with installation instructions and patented conversion technology for quick conversion

For more information please contact: [sales@invertec.co.uk](mailto:sales@invertec.co.uk)